

Fleet Management System for Vehicle Test Center



ISAAC Instruments' systems have always been easy to install and use. The hassle-free configuration has driven users to add loggers to their fleet of test vehicles. The costs have been reduced while acquiring more knowledge. In a logical evolution of its products, ISAAC Instruments introduces a practical way of monitoring a whole fleet of test vehicles: the **Real-Time Vehicle Monitor**.

While vehicles are being tested and developed on the proving grounds, the vehicle bus, additional sensors and GPS parameters are relayed to one or multiple computers. Critical parameters are displayed real-time on screen. ISAAC Instruments' proven **Fleet Manager** software ensures that you have an accurate overview of all your on-site vehicle operations via automated management reports. The real-time monitoring gives a whole new perspective to vehicle test/development and proving ground operations.

The benefits of the proposed solution belong to 3 categories:

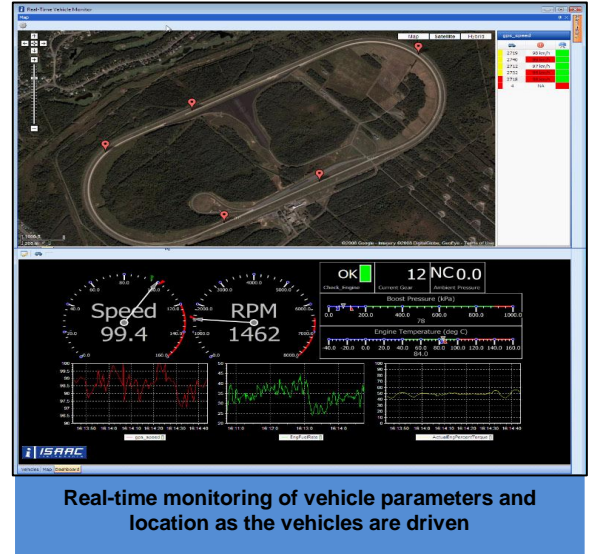
1. **Safety**
2. **Quality**
3. **Profitability**

(see other side)

1. Safety

Improving safety on the test track will protect human and material resources. Using the **Real-Time Vehicle Monitor** software allows you to:

- Manage vehicle traffic with more accuracy by eliminating delays typical of voice communications
- Enforce speed limits
- Manage spacing, timing and prevent collisions
- Improve response time in case of incidents or accidents
- Prevent mechanical failures by monitoring Diagnostic Trouble Codes (DTC)
- Provide all weather visibility

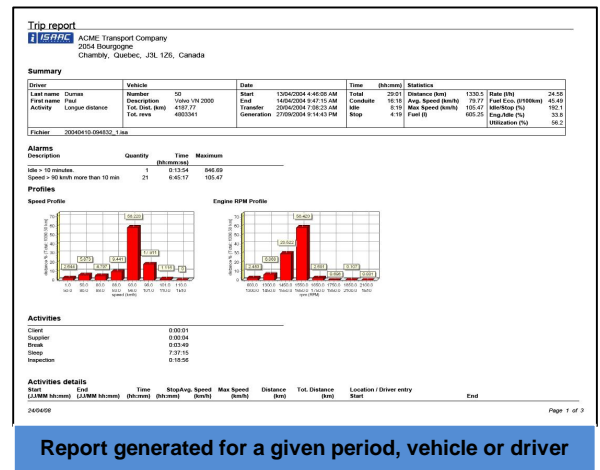


2. Quality

Quality of a test is defined by its conformity with the test plan. Achieving conformity is ensured by measuring and summarizing critical parameters.

Using the **Fleet Manager** software allows you to:

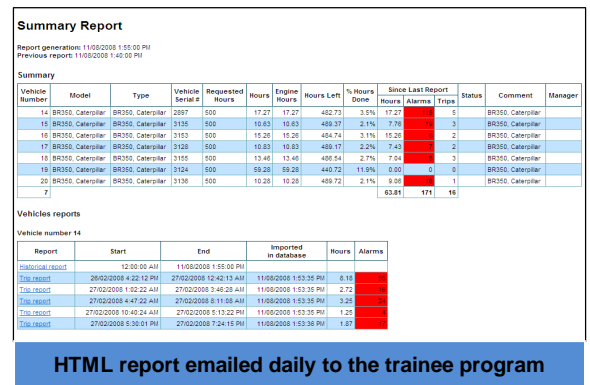
- Cumulate mileage, engine time, etc.
- Establish profiles (histograms)
- Report and count alarms
- Compare the procedure with the mission profile
- Validate and control the test procedures
- Reduce inconsistencies through driver training
- Communicate test evolution with automatic daily emails



3. Profitability

Faster and more efficient testing yields higher profitability. Both **Real-Time Vehicle Monitor** and **Fleet Manager** software significantly contributes to:

- Improved productivity by reduction of overall test time
- Reduced communications with a control center
- Simplified control procedures
- Minimized overall control costs
- Undisputable billing
- Increased testing value



See video presentations on our website: http://www.isaac.ca/app_rd.htm